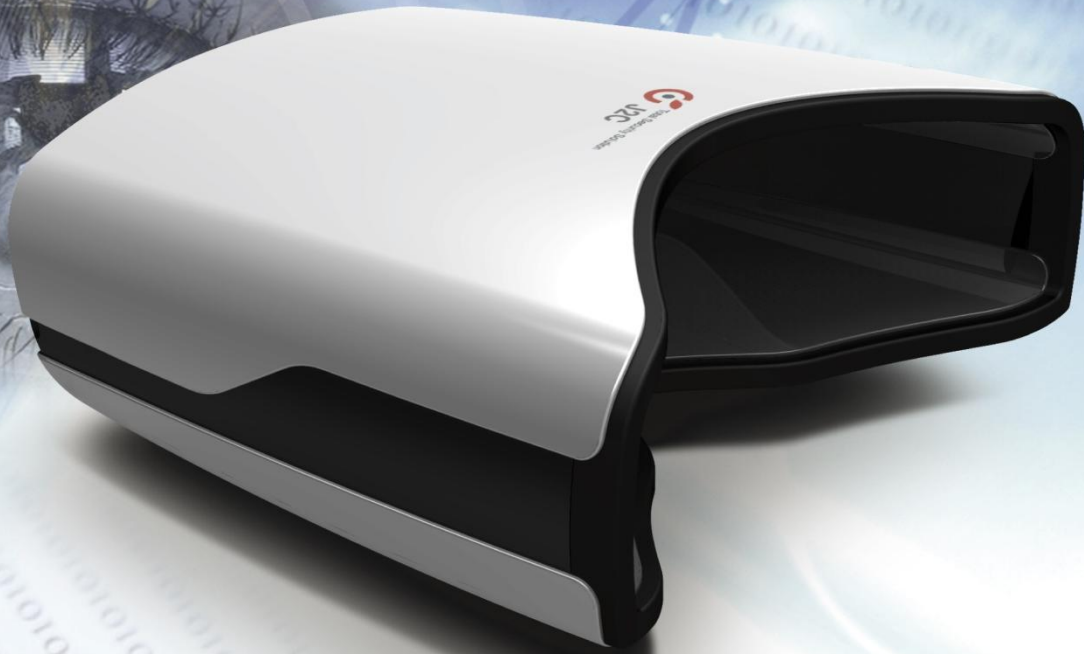


Next Generation Dual Iris Enrollment

Total Security Solution
J2C



Handheld Iris Enrollment E-100

Design-wise inspiring E-100 is a cost-effective iris image capture device that brings great performance in fast and automatic binocular image capturing whether indoors or for field use and optimized for rapid enrollment and identification or verification through iris capture applications to any security installation. This USB-powered handheld iris scanner outputs-ISO/IEC 19794-6 Compliant-the highest quality iris images and can be operated with nearly any host PC or mobile computing device. Simple and intuitive user interface such as the goggle-shape design and 3 Color LED indicator provide ease of use to both the subject and operator. We believe that this model is ideal for large and small scale civil ID programs, as well as general enrollment. Competitive offer will be the best benefit for you.

Features



Next Generation of Iris Recognition Technology

Patented Sensing Technology detects both iris impeccably even with wide gap of Binocular Disparity



Hand-held, Lightweight and & Sophisticate Goggle–shape design

Hand-held Goggle-shape design is enough attractive and user friendly



High-speed and High Quality Dual Iris Image Capture Technology

Allows fast capture for dual iris images simultaneously in compliance with the ISO/IEC 19794-6 Standards



Easy-to-use, Intuitive User Interface for fast enrollment

Automatic and easy-to-use, Intuitive User Interface enables users to be quickly enrolled



Internal & External LED Indicator Light

Lighting of Four internal LEDs (Blue/Red/Green/White) guides subject to the optimum capture and external color LED indicator gives same guidance to its operator as well



Comfortable-to-contact

Soft ambient light seeping through translucent gaps on both flanks of the device, minimizes users' discomfort and pitch-black fear caused by the darkness inside while they are using the device



IP(Ingress Protection) 64 Standard Compliant

Conforms to the elevated IP64 intrusion Protection standards for dust resistant and splash proof environment



Detachable cover for easy care or cleaning

The cover of device is detachable to allow for easy cleaning and maintenance



The USB 2.0 Powered

Fully powered by USB 2.0 Connection to host PC make it operate without power supply adaptor

Application



Public / Civil ID
Enrollment Program



Educational Material



Law Enforcement



Anti-Terror
(Public Safety)

Technical Specification

Item	Description
Dimensions (Net)	200(w) X 58(H) X 160(D) mm (7.87 x 2.28 x 6.30 inches)
Weight	450 grams (15.87 ounces)
Iris Image Pixel Resolution	640 X 480 Pixels, 8 bits
Image Output	Compliant with ISO 19794-6, Kind 7
Capture Distance (to forehead)	10 mm (0.39 inches)
Iris Diameter	≥230 Pixels for iris diameter of 9.5 to 13.5 mm
Inter-Pupillary Distance Covered	40 to 90 mm (1.57 to 3.54 inches)
Frame Rate	30 FPS (*Option 60 FPS)
LED Indication	Four LEDs <ul style="list-style-type: none"> • Blue : Device position is too high. • Green : Device position is OK. • Red : Device position is too low. • White : Image Capture in progress The operation of the External and Internal LED indication is the same
IR illumination for Iris Imaging	Dual LED : Wavelengths of 850 nm (~60%) and 750 nm (~40%)
Communication	USB 2.0 High Speed
Power	0.5A @ 5.0VDC
Operating Temperature	0°C ~ 40°C
Humidity Range	10 % to 90 % non-condensing
Eye Safety Standard	IEC 62471
Certification	CE, FCC, CCC, USB-IF, WHQL
Host OS supported by SDK	MS Windows XP / Windows Vista / Windows 7 / Windows 8 Linux, Android 4.0 (Ice Cream Sandwich) or later version



Total Security Solution

J2C Co., Ltd.

#J-220, Joongsokiup-gwan, Gyeonggi College of Science and Technology, 269, Gyeonggigwagidae-ro,

Siheung-si, Gyeonggi-do, 15073, Korea

Tel : +82-70-8800-9294 H.P : +82-10-7208-9492

E-mail : olivekim@jtroc.com



재민 창조경제혁신센터
GyeongNam Center for Creative Economy & Innovation

11F, 46, Changwon-daero 18beon-gil, Uichang-gu, Changwon-si, Gyeongsangnam-do, 51395, Korea

TEL : +82-55-256-2700 FAX : +82-55-251-2686